



WWF

ADOPTION

HK


Pandas

YOUR ADOPTION UPDATE

GIANT PROGRESS

SIGNS THAT PANDAS ARE
MAKING A COMEBACK



YOUR FIELD REPORT

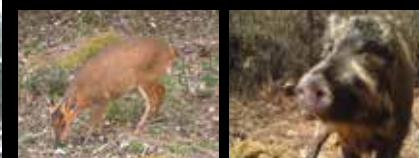


COMPILED BY WAN HUI
OF WWF-CHINA'S GIANT
PANDA PROGRAMME,
WHICH YOUR ADOPTION
SUPPORTS



Main and insets right:
Giant pandas in
Baishuijiang National
Nature Reserve
Inset left: Part of the
wildlife corridor, once a
busy highway

"I KNOW YOU'LL BE AS THRILLED AS
WE ARE AT THIS AMAZING PANDA COMEBACK,
AND IT'S A REALLY POSITIVE SIGN THAT
CONSERVATION EFFORTS YOU SUPPORT
ARE WORKING"



PANDA NEIGHBOURS

From left to right:
Muntjac deer,
wild boar, leopard,
golden monkey – all
photographed in
Tianhuashan
Nature Reserve

© TIANHUASHAN NATURE RESERVE

Welcome to your panda update of 2017, and get ready for some great news about giant pandas!

Last September, the status of giant pandas changed from endangered to vulnerable in the IUCN Red List of Threatened Species. This means they're no longer officially endangered. The new listing was announced following the publication of China's Fourth National Giant Panda Survey in 2015, which estimated there are 1,864 giant pandas in the wild – nearly 17% more than in 2003.

GIANT ACHIEVEMENT

I know you'll be as thrilled as we are at this amazing panda comeback, and it's a really positive sign that conservation efforts you support are working. This includes our work to establish a panda-friendly wildlife corridor along the disused part of a major road. You may remember reading about this in previous updates, but here's a little reminder:

12%
THE TOTAL
AREA USED BY
PANDAS HAS
INCREASED BY
NEARLY 12%
IN THE PAST
10 YEARS



Built in the 1970s, the 108 national highway winds through the Qinling mountains, where your adopted pandas live. It's used by hundreds of thousands of people each year, but has created a barrier between two giant panda populations – Mount Tianhuashan (home to 20 wild pandas) and Mount Xinglongling (home to 110 wild pandas).

In 2007, part of the road was re-routed through a tunnel, and we saw a chance to reconnect the panda populations. Working with teams from Guanyinshan Nature Reserve, we set about replanting and restoring bamboo forest along the abandoned section of road. This created a lush, green corridor through which pandas and other wildlife could move freely. And the black-and-white bears responded magnificently.

PANDA POSITIVE

Last year, we found camera trap images showing that giant pandas were using the wildlife corridor and communicating with each other for the first time in 40 years. We also found

pictures of other wildlife, such as golden monkeys, takins and leopards.

This is a huge achievement, and one of many that adopters like you have helped support. I've listed more successes, right, but we still have much to do.

While the overall size of the panda population is increasing, there's evidence that some panda populations are decreasing, particularly those found in the smallest and most degraded habitat patches, such as Liangshan, Xiangling and Niuweihe. And panda habitat could become more fragmented as new roads and other infrastructure are built in the region, and climate change affects bamboo forests.

With your support, we can continue working hard to protect pandas and their habitat. Together, we'll make sure our famous panda logo remains a symbol of conservation success.



PANDA IMAGES © BAISHUIJIANG NATURE RESERVE / WWF-CHINA. INSET TOP LEFT © WWF-CHINA. BEARING FRUIT. INSET LEFT & RIGHT © WWF-CHINA. CENTRE © SIMON DE REY-WHITE / WWF-UK

BEARING FRUIT

We've been working to protect pandas since 1980, and these are just some of the many achievements adopters like you have helped support in the last few years



27

Since 2003, we've helped the Chinese government establish 27 new nature reserves, protecting an additional 11,804 sq km of panda habitat



200

We've helped people living in more than 200 local villages to find alternative livelihoods, increasing their incomes and safeguarding panda habitat



550

Since 2013, we've donated 550 infrared camera traps to 29 national reserves and forest farms across six mountain ranges

ACT NOW

FOR GIANT PANDAS
& OTHER SPECIES

UNLESS WE TAKE URGENT ACTION, WILDLIFE
POPULATIONS COULD DECLINE BY 67% BY 2020.
BUT WE CAN TURN THINGS AROUND

Our *Living Planet Report* is the world's
leading, science-based look at the
health of our amazing planet. The 2016
edition showed that human activities
such as deforestation and pollution,
together with climate change, may be
pushing life on Earth towards the biggest
mass extinction since the dinosaurs.
But with your support, we can create a
resilient planet for people and nature.

You can find the the report on our website:

www.wwf.org.hk



HEALTHIER FUTURES

**THANKS TO YOUR SUPPORT, WE'RE
INTRODUCING BIOGAS SYSTEMS
AND FUEL-EFFICIENT WOOD STOVES -
HELPING PEOPLE AND PANDAS**

In China, many remote, rural communities lack the things we take for granted, such as a ready supply of gas and electricity for cooking and heating. Instead, people collect firewood from the forests to use as fuel. But this causes problems. Burning the wood produces choking smoke that engulfs their homes and lungs, and collecting it causes damage to fragile panda habitats. Biogas systems and fuel-efficient wood stoves offer safer and more efficient solutions.

POO POWER

Biogas systems convert animal dung and toilet waste into methane gas, which is safely fed into people's households for cooking and heating. Fuel-efficient wood stoves work well using smaller amounts of fuel. Both reduce the need to gather firewood from the forests.

Thanks to support from adopters like you, we've already helped provide 6,000 households with these brilliant stoves and biogas systems and, soon, more people will benefit. In the Liangshan mountains for example, we're working with Meigudafengding Nature Reserve and local Yi communities to reduce firewood collection from the Wahei-Yiziyaqou corridor, which is used by giant pandas.

Over the coming months, we'll be equipping around 300 households in eight villages with new stoves. This should save 11,820 tonnes of firewood each year and protect 134,000 sq km of forest. By making people's lives easier and reducing the damage to panda habitat, this is a win-win situation all round.



**1 MILLION
GIANT PANDAS
SHARE THEIR
HABITAT WITH
OVER ONE MILLION
PEOPLE, LIVING
IN NEARLY
200 TOWNS**



BE A TIGER RANGER 老虎拯救隊

2017.10.7-15

**德福廣場1期地下中央展場
Central Atrium 2, G/F, Telford Plaza 1**

活動包括 Activities include:



摺紙工作坊
Mini Art Workshop



VR 與虎體驗
VR Experience



影相站
Photo Booth



手繪工作坊
Hand Painting Workshop



WWF Hong Kong



WWF Hong Kong



WWFhk



WWFhk

#iProtectTigers

活動贊助 Event Sponsor



場地贊助 Venue Sponsor



媒體夥伴 Media Partners



As well as helping to safeguard giant pandas,
your adoption supports our other vital work to help
protect our beautiful planet and its wildlife.

Thank you.



Working to sustain the natural
world for people and wildlife

together possible. wwf.org.hk

© 1986 Panda symbol WWF © "WWF" is a WWF Registered Trademark

WWF-Hong Kong, 15/F, Manhattan Centre, 8 Kwai Cheong Road, Kwai Chung, N.T., Hong Kong.

Tel: (852) 2526 1011, Fax: (852) 2845 2734, Email: adopt@wwf.org.hk

Registered Name 註冊名稱: World Wide Fund for Nature Hong Kong 世界自然(香港)基金會

(Incorporated in Hong Kong with limited liability by guarantee 於香港註冊成立的擔保有限公司)



MIX
Paper from
responsible sources
FSC™ C010819