



WWF

OVERVIEW

HK

2018

WWF-Hong Kong One Planet Schools Programme Overview 2018-2019





WWF

WWF is one of the world's largest and most respected conservation organizations, with a network active in more than 100 countries. WWF-Hong Kong has been working since 1981 to deliver solutions for a living planet with its conservation and education programmes.

OUR CONSERVATION FOCUS IN HONG KONG



WATER & WETLANDS



OCEANS



CLIMATE & ENERGY



WILDLIFE

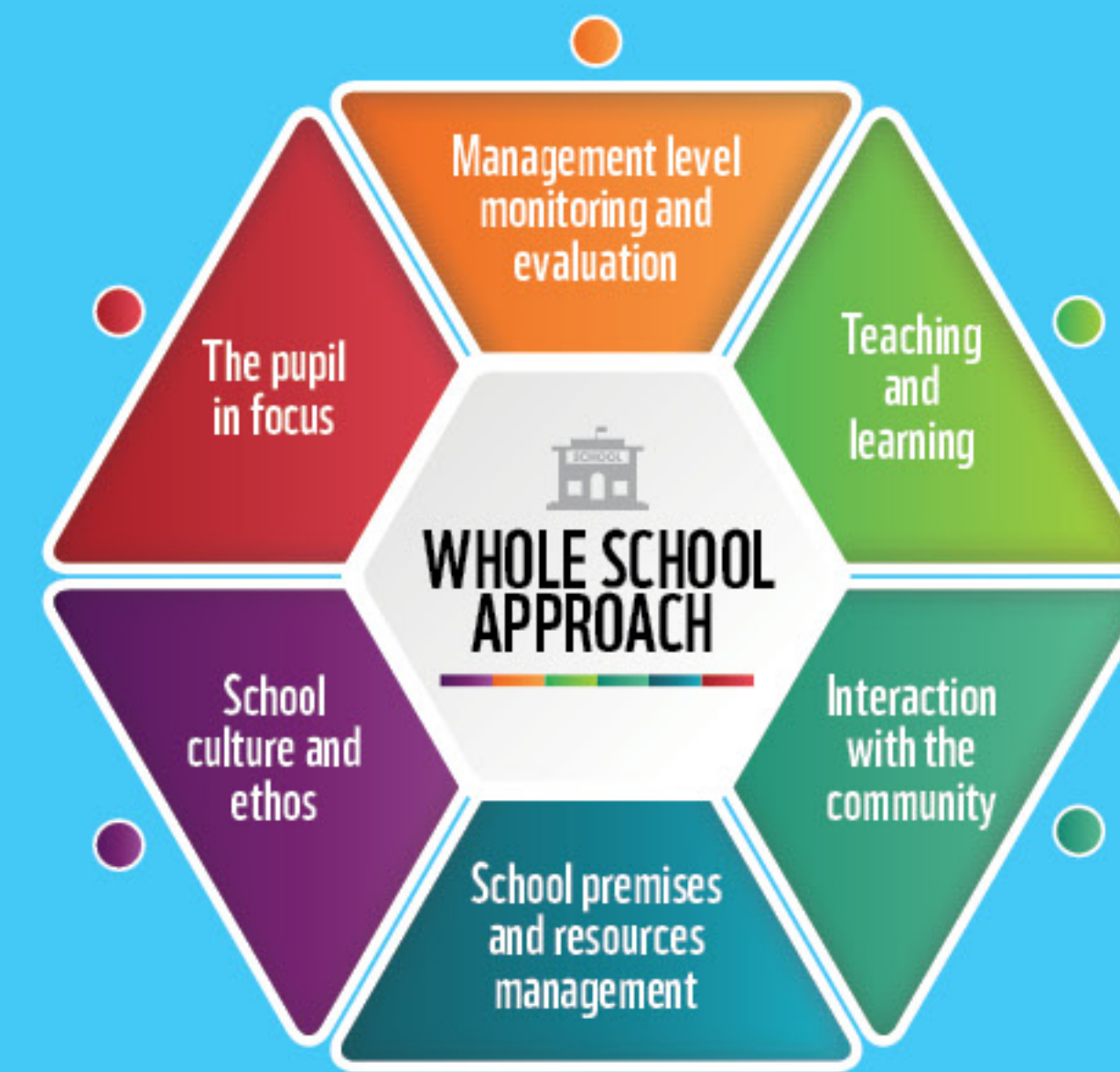


BIODIVERSITY & SUSTAINABILITY OF HONG KONG

ONE PLANET EDUCATION PROGRAMME

The programme aims to empower young people by teaching them about conservation and sustainable living and enabling them to take actions to protect biodiversity and champion low-carbon living. This prepares them for work in green jobs in a green economy. We aim to create a new generation of conservation and sustainability advocates through fun and engaging real-life experiences.

Our ambition is to mainstream sustainability into Hong Kong's education system through a whole school approach. We join with school partners, building and sustaining a community of practice to provide outdoor learning and outreach activities for students. The programmes meet the needs of schools across Hong Kong in terms of both formal curriculum and extra-curriculum learning.



Since 1997, the Hong Kong government has promoted the "whole school approach" as advocated by UNESCO. The whole school approach tackles a range of issues such as school resource consumption, community outreach, curriculum development, pedagogy and landscaping that will assist schools to become more sustainable. Together with schools we can address the day-to-day practices and assist in the non-formal or hidden curricula. Schools adopting the whole school approach practice what they preach and reinforce sustainability values with action.

WWF-HONG KONG'S SUPPORT TO WHOLE SCHOOL APPROACH

In order to work with schools to mainstream sustainability into the education system, WWF provides different kinds of learning experiences for students and professional development for teachers. We collaborate with schools on different thematic learning projects and curriculum integration. In the 2018-19 school year, we will extend our support to enable schools to strengthen their relationship with parents and the community.

LEARNING EXPERIENCES FOR STUDENTS ●●

Outdoor learning experiences take place in our three outdoor classrooms at Hoi Ha Marine Life Centre, Island House Conservation Studies Centre and Mai Po Nature Reserve. A total of 19 different learning themes have been designed for students in different grades and with different learning needs.

Outreach programmes on specific themes, for example tigers, marine litter and sustainable lifestyle, are given on campus by WWF educators.

SCHOOL PARTNERSHIP ●●●●

Review of school-based sustainability policy by our team makes a pathway for schools to transform to a sustainable school.

Curriculum integration and STEM learning project with conservation and sustainability issues enable students to learn progressively about nature conservation with a cross disciplinary approach.

Thematic learning with nature as an entry point provides a holistic way to grasp the different concepts about the environment. The WWF education team hopes to collaborate with schools on a sustainability vision.

TEACHER PROFESSIONAL DEVELOPMENT AND COMMUNITY OF PRACTICE ●●●

Staff development day takes place in our outdoor classrooms, enabling school staff to learn and be inspired with hands-on experience.

Professional development courses on different conservation issues and teaching approaches will be held on selected dates in 2018-19.

Sustainability talks on campus give an opportunity for school staff to understand both local and global conservation issues. The talk also links to practical actions that everyone at school can undertake.

SCHOOL AND COMMUNITY ●●●

Community activities for parent-teacher associations invites parents and the community to work with schools as they transform into sustainable schools.



BOOK ONLINE

wwf.org.hk/schools/en

ENQUIRY AND BOOKING HOTLINE

Telephone: 2526-1011 (choose 2 for English, then press 5) Email: education@wwf.org.hk

NEW ACTIVITY FOR 2018-19

VOYAGE TO A PLASTIC OCEAN

Join WWF to uncover the truth beneath the surface of our seemingly pristine oceans, with never-before-seen footage of marine life and plastic pollution, and the ultimate consequences for human health. The activity will give students a new perspective on the consequences of our global disposable lifestyle.

FEATURES

Documentary screening	22-minute educational version of <i>A Plastic Ocean</i>
Sharing by WWF educator	Story behind <i>A Plastic Ocean</i>
Teaching plan	Teaching plans cover all Hoi Ha Wan programmes

WHO IS IT FOR?

Primary 4 to Secondary 6 students

ABOUT A PLASTIC OCEAN

Described by Sir David Attenborough as “the most important film of our time,” this award-winning documentary was filmed in 20 locations around the world revealing, in both beautiful and chilling detail, how plastics seriously affect humans and animals. Hong Kong’s plastic pallet incident in 2012 is also featured in the film.

WHERE?

School campus



STAFF DEVELOPMENT DAY IN NATURE

Plan your staff development day in one of our outdoor classrooms to enable teachers to be inspired by the wonders of nature. Our programme can be customized according to the needs of different schools.

FEATURES

Sustainability and curriculum	To discover the link between sustainability issues and formal curriculum
Teaching demonstration in nature	Hands-on and practical teaching activities for learning about nature
Participation in conservation actions	Contribute your effort to conserve our nature environment

WHO IS IT FOR?

All staff of primary and secondary schools

LANGUAGE

English or Cantonese

WHERE?

Island House Conservation Studies Centre, Hoi Ha Marine Life Centre or Mai Po Nature Reserve



COMMUNITY ACTIVITY FOR PARENT-TEACHER ASSOCIATIONS

Organize a community activity for Parent-Teacher Associations to gain parents’ support in transforming your school into a sustainable one. Field trips, talks, workshops and more can be customized according to the needs of each school.

FEATURES

Family-friendly activity	Parents can join an activity with students
Learning through real-life experience	Hands-on activities for learning
Facilitated discussion	An opportunity for parents and teachers to share views on how to make their school more sustainable

WHO IS IT FOR?

Parents, teachers and students

WHERE?








School campus, Island House Conservation Studies Centre, Hoi Ha Marine Life Centre or Mai Po Nature Reserve



WWF’S EDUCATION PROGRAMME SUPPORTS SCHOOL CURRICULUMS THROUGH:

- 01 General studies
- 02 Science
- 03 Liberal studies
- 04 Biology
- 05 Geography
- 06 Integrated humanities
- 07 Moral, civic and national education
- 08 STEM education
- 09 Life-wide learning
- 10 Project learning
- 11 Extra-curricular activities
- 12 Other learning experiences



Primary 1-3		Cross Key Learning Areas - General Studies Strand				Other Related Curriculum	No. of Participants	Fee	Activity period and duration
		People and Environment	Science and Technology in Everyday Life	Community and Citizenship	Global Understanding and the Information Era				
Shark Adventure (Hoi Ha Marine Life Centre) Highlights: Discover interesting features of sharks and the threats they face as they grow up by mimicking a pup. Format: Role-play, drama in education. Includes film screening <i>A Plastic Ocean</i> .			✓			✓	20-40 including 2-4 teachers	HK\$100 per student or teacher	3-hour programme Available on weekdays, except public holidays, all year round Mini-world of Mai Po is only available from April to October
Nature Artist (Island House Conservation Studies Centre) Highlights: Become a nature artist, learn about local wildlife and search for non-living materials to create an artwork about nature. Format: Sensory game, plant observation and artwork session.			✓			✓			
Primary 4-6									
Green Kid Union (Island House Conservation Studies Centre) Highlights: Learn about sustainable living through role-play, games and case studies. Format: Role-play, games, self-exploration and video making focusing on a sustainable lifestyle.			✓			✓			
Hoi Ha Detective (Hoi Ha Marine Life Centre) Highlights: Explore the beach using different senses and discover the characteristics of different marine creatures and their relationship with humans. Format: Beach exploration, marine organism observation, sensory activities. Includes film screening <i>A Plastic Ocean</i> .			✓	✓		✓	20-40 including 2-4 teachers	HK\$100 per student or teacher	
Wetland Detective (Mai Po Nature Reserve) Highlights: Discover the significance of wetlands to humans and wildlife through sensory exploration and appreciation of wetland habitats. Format: Role-play, sensory activities.			✓			✓			
The Story of Birds (Mai Po Nature Reserve) Highlights: Discover the importance of protecting wetland habitats by role-playing as a black-faced spoonbill on a migratory adventure. Format: Bird migration simulation, bird watching.			✓			✓	30-40 including 2-4 teachers	FREE for eligible schools*	
Mini-world of Mai Po (Mai Po Nature Reserve) Highlights: Observe insects up close and learn about their relationship with the surrounding environment. Format: Insect observation, pond dipping.			✓	✓					

Other Related Curriculum: Moral, civic and national education • Project learning • Life-wide learning

Book online at www.wwf.org.hk/schools/en

*For non-eligible local schools the regular fee of HK\$6,500 will apply for a group up to 30 persons

Secondary 1 - 6		Related curriculum											Other Related Curriculum	No. of Participants	Fee	Activity period and duration			
		Biology		Geography			Science			Integrated Science	Liberal Studies								
		Organisms and Environment	Applied Ecology	Changing Climate	Oceans in Trouble	Building a Sustainable City	Global Warming	Introducing Science	Looking at Living Things	Living Things and Air	Materials of the Modern World	Balance in Nature					Hong Kong Today	Energy Technology and the Environment	
Undiscovered Truth (Island House Conservation Studies Centre) Highlights: Take part in shoreline clean-up and reflect on the impacts of our daily habits on the environment. Format: Coastal area exploration, marine litter surveys.			✓	✓		✓	✓				✓	✓	✓	✓		30-40 including 2-4 teachers	HK\$50 per student or teacher	4-hour programme Available on weekdays, except public holidays	
Secondary 4 - 6																			
Coastal Ecologist (Hoi Ha Marine Life Centre) Highlights: Investigate intertidal habitats with scientific methods in a marine park and raise awareness of the importance of establishing Marine Protected Areas. Format: On-site field study at rocky shores and sandy shores. Learn about intertidal habitats by setting up quadrats, observe the features of coastal organisms.			✓	✓			✓							✓	✓	✓	20-40 including 2-4 teachers	HK\$100 per student or teacher	
Sustainable City @ Tai Po (Island House Conservation Studies Centre) Highlights: Field studies at various locations in Tai Po and discussion of the factors to make a sustainable city. Format: Introduction to Tai Po's history, field study, group discussion.				✓			✓							✓	✓	✓	30-40 including 2-4 teachers	HK\$50 per student or teacher	3.5-hour programme Available on weekdays, except public holidays
Wetland Ecologist (Mai Po Nature Reserve) Highlights: Experience the daily work of an ecologist, learn the value and importance of biodiversity. Format: Wildlife survey, use of scientific equipment, plankton observation.			✓	✓										✓		✓			
Mangrove Ecology (Mai Po Nature Reserve) Highlights: Explore the core zones of the reserve, study the largest mangrove community in Hong Kong, and understand the adaptive features of mangroves and the threats they are facing. Format: In-depth study and identification of mangrove species, group discussion and presentation.			✓	✓										✓		✓			4-hour programme Available on weekdays, except public holidays
Urban Planner @ Deep Bay (Mai Po Nature Reserve) Highlights: Act as different stakeholders in group discussions and discuss a real-life development case. Format: Field study, case analysis, group discussion and presentation.				✓			✓							✓	✓	✓			

● Other learning experiences
 ● Life-wide learning
 ● Project learning
 ● Moral, civic and national education

Book online at www.wwf.org.hk/schools/en

*For non-eligible local schools the regular fee of HK\$6,500 will apply for a group up to 30 persons



OVERVIEW

HK

2018

WWF-Hong Kong One Planet Schools Programme Overview 2018-2019



ONE PLANET SCHOOLS IN NUMBERS

100%
RECYCLED



413

primary and secondary schools
worked with WWF

26,100

More than 26,100 students
took part in our outreach and
school partnership projects



90%

In 2016-17, more than 90
per cent of polled teachers
agreed that WWF's
education programmes
provided students a unique
learning experience.

14,557

students participated in our outdoor learning experiences



Why we are here

To stop the degradation of the planet's natural environment and
to build a future in which humans live in harmony with nature.

wwf.org.hk

© 1986 Panda symbol WWF © "WWF" is a WWF Registered Trademark
WWF-Hong Kong, 15/F, Manhattan Centre, 8 Kwai Cheong Road, Kwai Chung, New Territories.
Tel: (852) 2526 1011, Fax: (852) 2845 2734, Email: wwf@wwf.org.hk
Registered Name 註冊名稱: World Wide Fund For Nature Hong Kong 世界自然(香港)基金會
(Incorporated in Hong Kong with limited liability by guarantee 於香港註冊成立的擔保有限公司)



20 February 2018

Dear School Principal,

WWF-Hong Kong
One Planet Schools Programme (2018/19 School Year)

WWF is one of the world's leading conservation organisations. Our One Planet Schools Programme aims to help achieve the United Nations Sustainable Development Goals (SDGs), by providing students with quality education to develop lifelong values, underpinning sustainability and mainstreaming sustainable lifestyles into the formal education system. In the 2016-17 school year, the One Planet Schools Programme has reached over 30% of schools across Hong Kong through a variety of educational and teacher training activities.

It is our pleasure to invite you to join our One Planet Schools Programme during the 2018/19 School Year. For details of the programme, key learning objectives and the corresponding school curriculum, please refer to this ***Programme Overview***. In addition to providing experiential learning for students, WWF is keen to advocate a "Whole School Approach" to ESD in the Hong Kong education sector, from having **the pupil in focus, teaching and learning, school culture and ethos, school premises and resources management to management level monitoring and evaluation as well as interaction with the community**. We target to make Hong Kong schools more sustainable to become champions of the environment.

We would be most grateful if you could disseminate information in the booklet to teachers-in-charge of **General Studies, Moral, Civic & National Education, Environmental Education, Integrated Science, Biology, Geography, Life-wide Learning, Other Learning Experience and Extra-curricular Activities**. Details are available at WWF website [www.wwf.org.hk/schools/en]. We offer both free and fee-based programmes.

For enquiries, please feel free to contact our Education Department on 2526-1011 or at education@wwf.org.hk.

We look forward to seeing you and your students soon.

Yours faithfully,

Yamme Leung
Director, Education
WWF-Hong Kong

together possible™